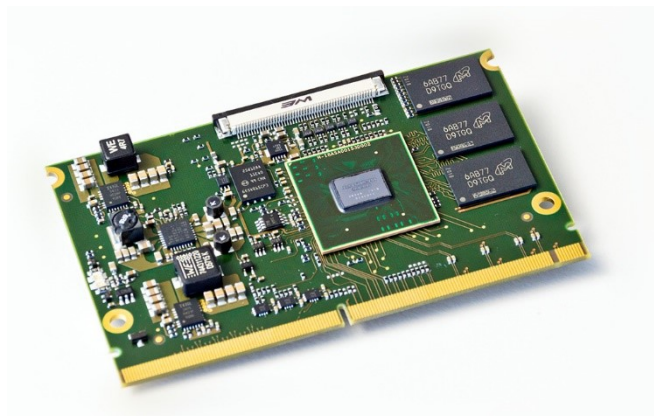


miriac™ MPX-LS1043A

based on NXP QorIQ LS1043A CPU

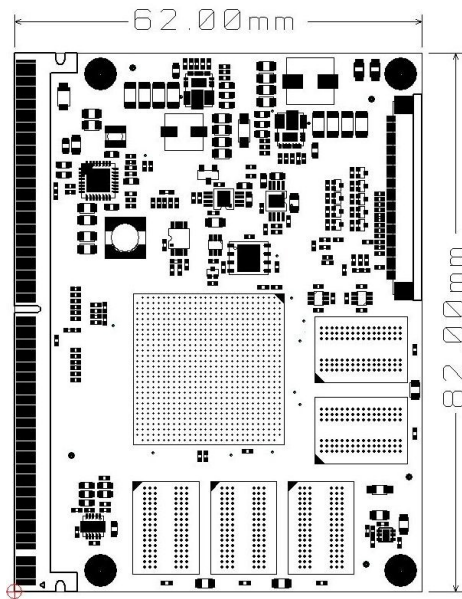
Product Description



miriac MPX-LS1043A System on Module

Feature Overview

- NXP QorIQ LS1043A CPU: 4 ARM® Cortex® A53 64-bit cores at up to 1.6 GHz core frequency
- new cost effective MPX-2 System on Module form factor, connecting to a standard edge connector (MXM3.0 socket)
- up to 8 GB 32 Bit DDR4 ECC RAM
- up to 2GB SLC NAND Flash & up to 16 MB SPI Flash
- 6x Gb Ethernet
- parallel Ethernet interface: configurable as 2x RGMII
- max. 4x SerDes lanes at 10 Gb/s, configurable in different options:
 - max. 3x PCIe 2.0
 - 1x SATA 3.0 (up to 6GB/s)
 - QSGMII at 1000bps
- 3x USB 3.0
- 1x SD/eMMC
- other interfaces: 4x I²C, 2x DUART, 4x SPI, Timer/PWM unit, 1x JTAG (with COP support)
- temperature sensor
- All on board supply voltages are monitored by a separate μ -controller.
 - Control of on board voltages and the reset logic offer a wide spectrum of custom functionality, even low level safety functions.



Software Support

- Linux,
- VxWorks,
- Microware OS-9,
- others on request

Order Number	Description	Status
854101	miriac MPX-LS1043A SoM, LS1043@1.2GHz, 2GB DDR ECC RAM, 512MB Flash memory	available in Q2 2016
854210	miriac SBC-LS1043A Development Kit, SoM, Carrier, Linux BSP, accessories	BoO

Fig. 1 miriac MPX-LS1043A SoM Layout

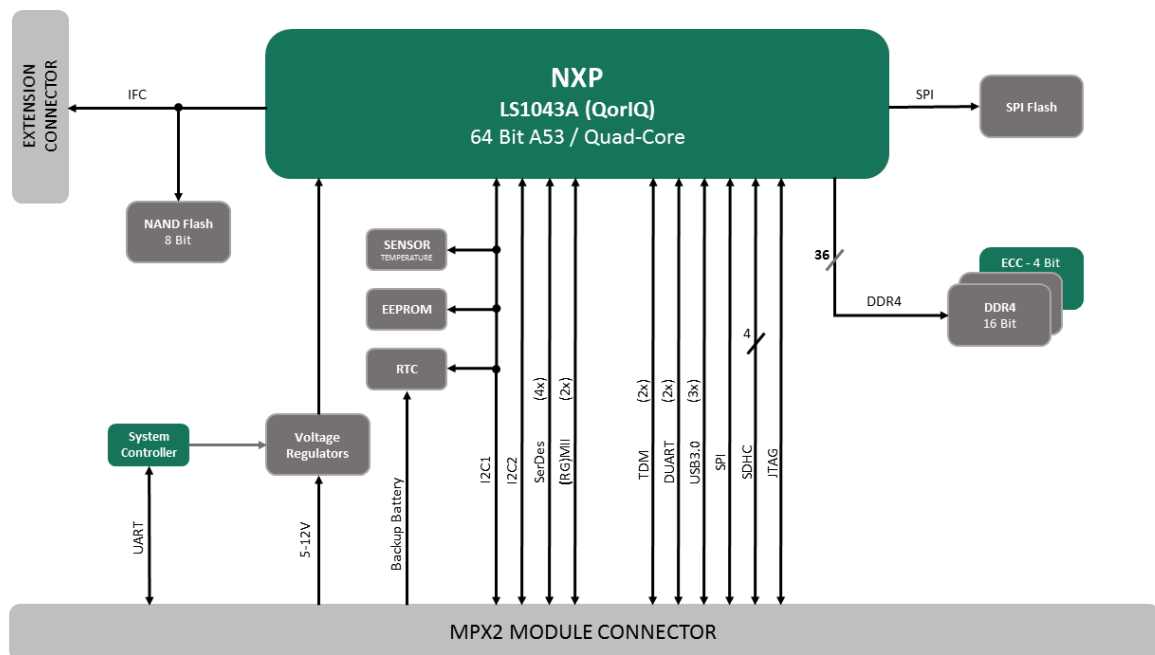


Fig. 2 miriac MPX-LS1043A Block Diagram

You are interested in more information? You are very welcome to contact us.

MicroSys Electronics GmbH
 Muehlweg 1
 82054 Sauerlach
 Germany www.microsys.de

Phone +49 (0)8104 801-0
 Hotline +49 (0)8104 801-130
 Fax +49 (0)8104 801-110
 Email info@microsys.de