

miriac™ MPX-LS1046A

based on NXP QorIQ LS1046A CPU

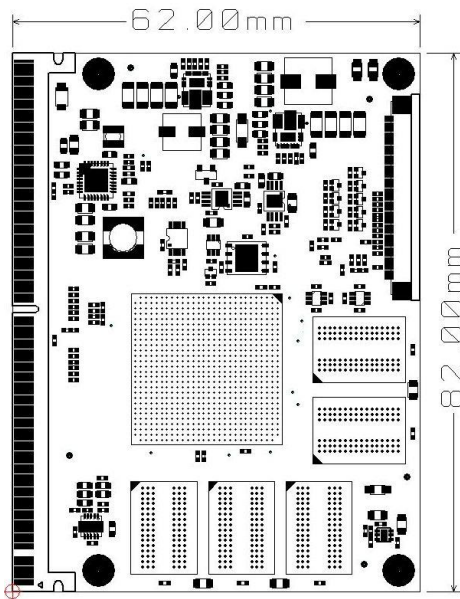
Product Description



miriac MPX-LS1046A System on Module

Feature Overview

- NXP QorIQ LS1046A CPU: 4 ARM® Cortex® A72 64-bit cores at up to 1.6 GHz core frequency
 - new cost effective MPX-2 System on Module form factor, connecting to a standard edge connector (MXM3.0 socket)
 - variants available with QorIQ LS1023A, LS1043A, LS1048A, LS1088A
 - up to 8GB 64 Bit DDR4 ECC RAM at 2100 MT/s
 - up to 2GB SLC NAND Flash & up to 64MB QuadSPI Flash
 - parallel Ethernet interface: configurable as 2x RGMII max
 - IEEE Std. 1588 support
 - max. 8x SerDes lanes at 10 Gbps, configurable in different options:
 - max 3x PCIe 3.0 at 8Gbps (supporting x4 lane operation)
 - max 1x SATA 3.0 at 6Gbps
 - max 1x QSGMII at 5Gbps
 - max. 5x SGMII interface at 1Gbps
 - max. 2x SGMII interface at 2,5Gbps
 - max 1x XFI interface (10GbE)
 - 3x USB 3.0 Host /Client /OTG support
 - 1x SDHC
 - other interfaces: 2x I²C, 2x DUART, 1x SPI, 1x JTAG
 - temperature sensor
-
- All on board supply voltages are monitored by a separate μ -controller. Control of on board voltages and the reset logic offer a wide spectrum of custom functionality, even low level safety functions.



Software Support

- Linux,
- Microware OS-9,
- others on request

Order Number	Description	Status
855601	miriac MPX-LS1046A SoM, LS1046@1.2GHz, up to 2GB DDR ECC RAM, up to 512MB Flash memory	available in Q4 2016
tbd	miriac SBC-LS1046A Development Kit, SoM, Carrier, Linux BSP, accessories	BoO

Fig. 1 miriac MPX-LS1046A SoM Layout

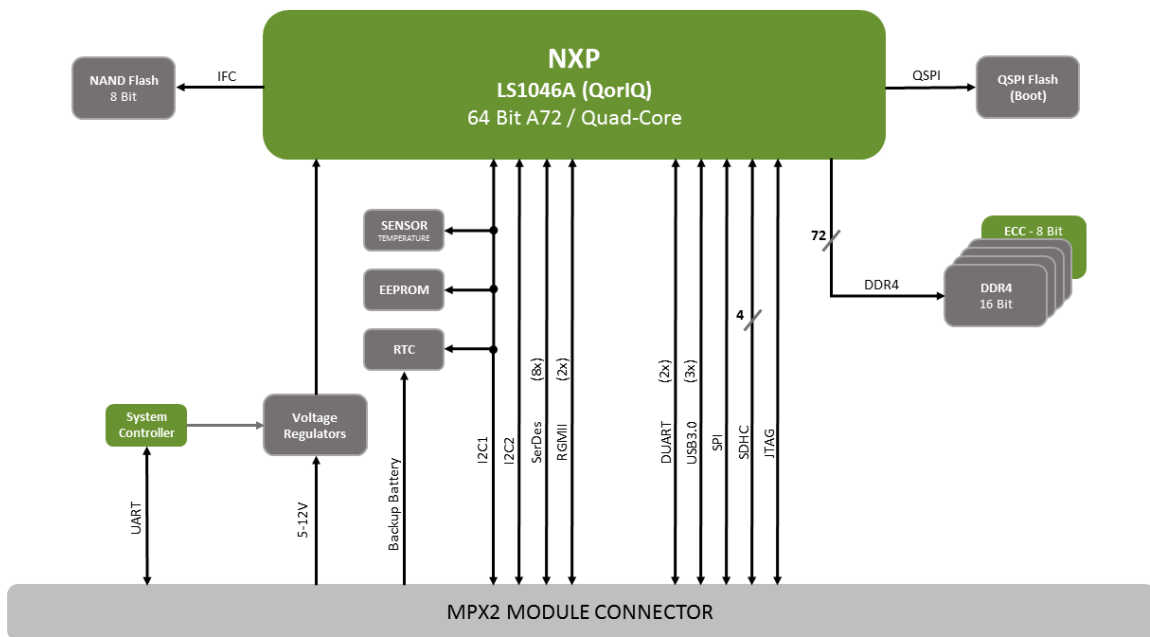


Fig. 2 miriac MPX-LS1046A Block Diagram

You are interested in more information? You are very welcome to contact us.

MicroSys Electronics GmbH
 Muehlweg 1
 82054 Sauerlach
 Germany www.microsys.de

Phone +49 (0)8104 801-0
 Hotline +49 (0)8104 801-130
 Fax +49 (0)8104 801-110
 Email info@microsys.de

Distributor: **NeoMore** 5 Rue de la Plaine 78860 Saint-Nom-la-Bretèche FRANCE +33 1 30 64 15 81 www.neomore.com