



miriac™ MPX-T1024 SoM

based on NXP QorIQ T1024 CPU

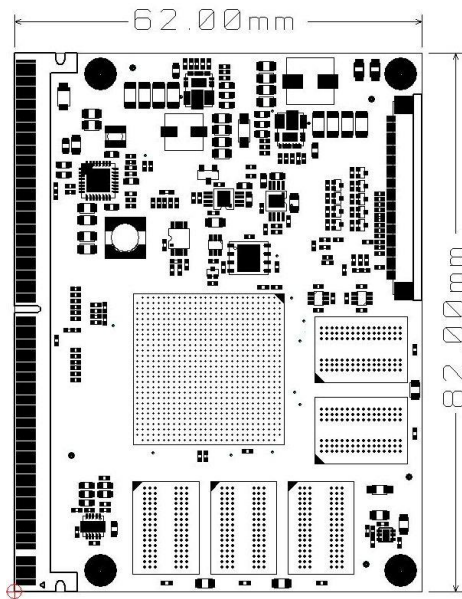
Product Description



miriac MPX-T1024 System on Module

Feature Overview

- NXP QorIQ T1024 CPU: 2x e5500 64-bit cores at up to 1.4GHz core frequency
- new cost effective MPX-2 System on Module form factor, connecting to a standard edge connector (MXM3.0 socket)
- variants available with QorIQ T1014 and T1042 CPUs
- hybrid 32-bit mode to support legacy software
- up to 8GB 64 Bit DDR4 ECC RAM at 1600 MTps
- up to 2GB SLC NAND Flash & up to 16MB SPI Flash
- parallel Ethernet interface: configurable as 2x RGMII max
- IEEE Std. 1588 support
- max. 4x SerDes lanes at 10 Gb/s, configurable in different options, e.g.:
 - max. 3x PCIe 2.0
 - max. 1x SATA 2.0 at 3Gbps
 - max. 1x QSGMII at 5Gbps
 - max. 3x SGMII interfaces at 2.5Gbps
 - max. 1x XFI interface at 10Gbps
- 2x USB 2.0 Host /Client /OTG support
- 12 Bit Display Interface
- 1x SDHC
- other interfaces: 2x I²C, 2x DUART, 1x SPI, 1x TDM, 1x JTAG (with COP support)
- temperature sensor
- All on board supply voltages are monitored by a separate μ -controller.
 - Control of on board voltages and the reset logic offer a wide spectrum of custom functionality, even low level safety functions.



Software Support

- Linux,
- VxWorks,
- Microware OS-9,
- others on request

Order Number	Description	Status
853905	miriac MPX-T1024 SoM, T1024@1.4GHz, 2GB DDR ECC RAM, 512MB & 4MB SPI Flash Memory	available
534315	miriac SBC-T1024 Development Kit, SoM, Carrier, Linux BSP, accessories	available

Fig. 1 miriac MPX-T1024 SoM Layout

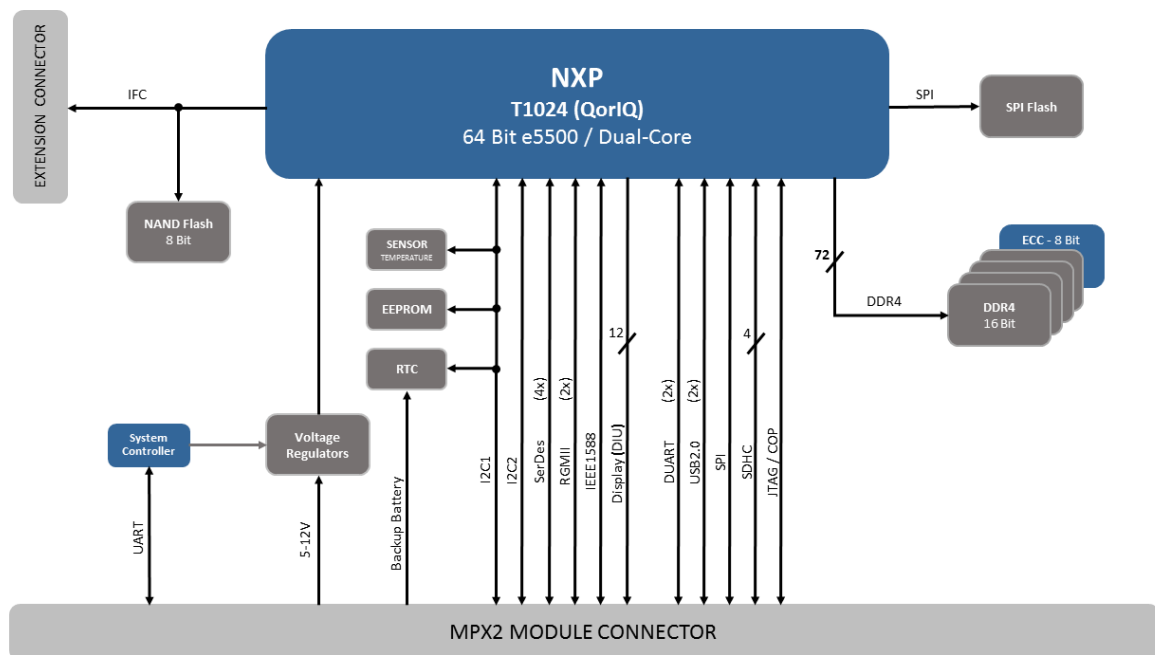


Fig. 2 miriac MPX-T1024 Block Diagram

You are interested in more information? You are very welcome to contact us.

MicroSys Electronics GmbH
 Muehlweg 1
 82054 Sauerlach
 Germany www.microsys.de

Phone +49 (0)8104 801-0
 Hotline +49 (0)8104 801-130
 Fax +49 (0)8104 801-110
 Email info@microsys.de